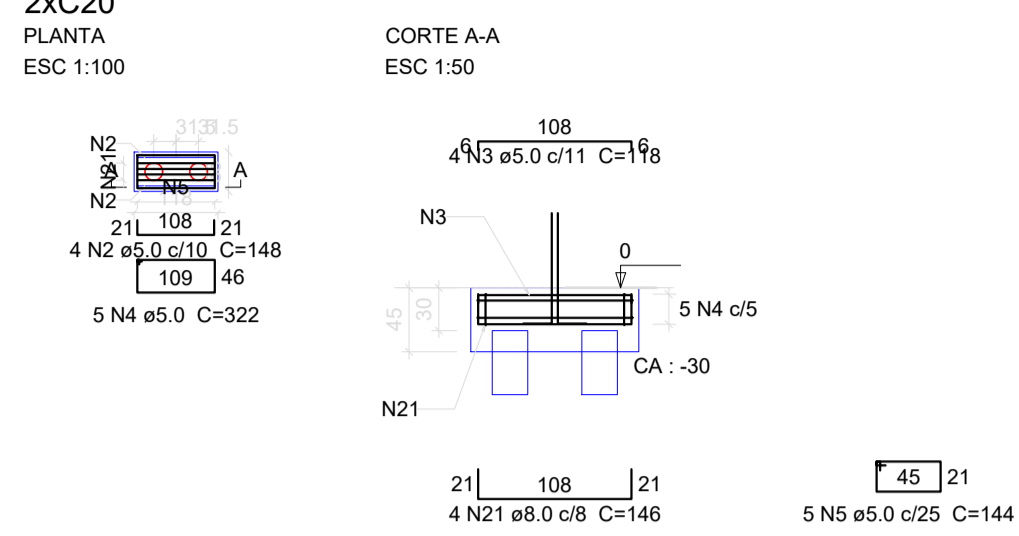
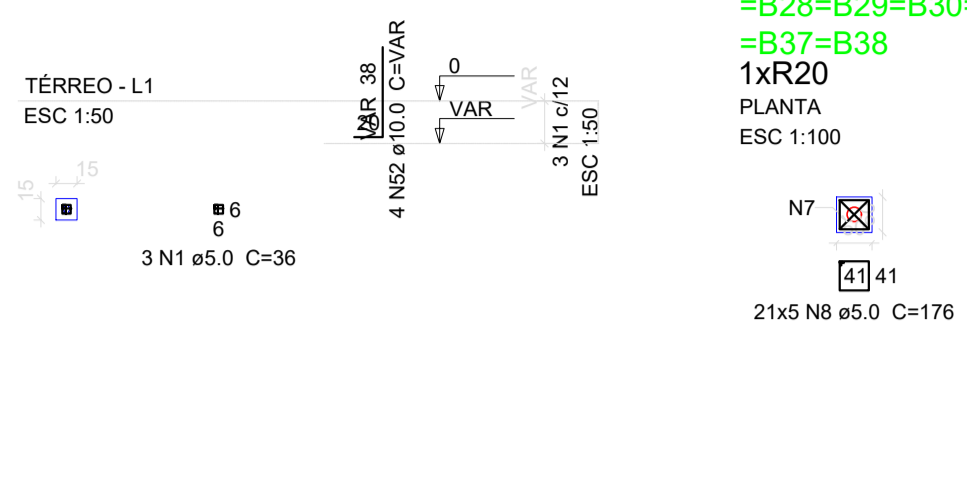


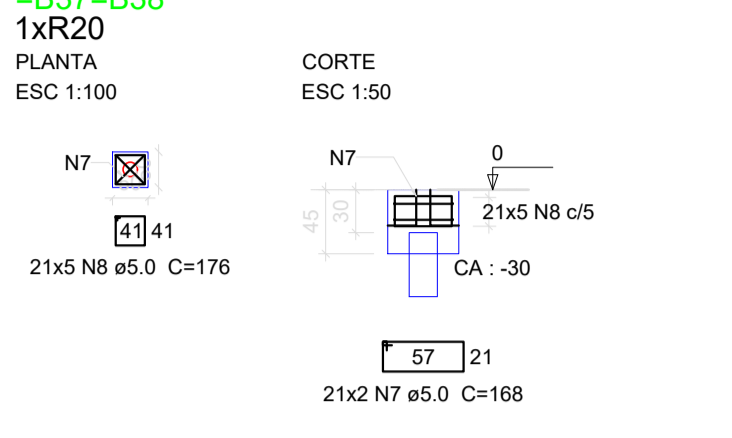
B1=B2=B3=B4=B5=B6=B7=B8



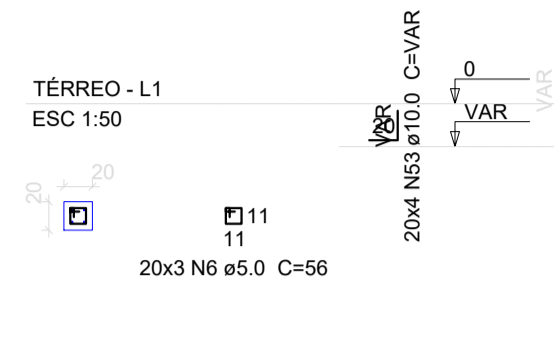
P1=P2=P3=P4=P5=P6=P7=P8



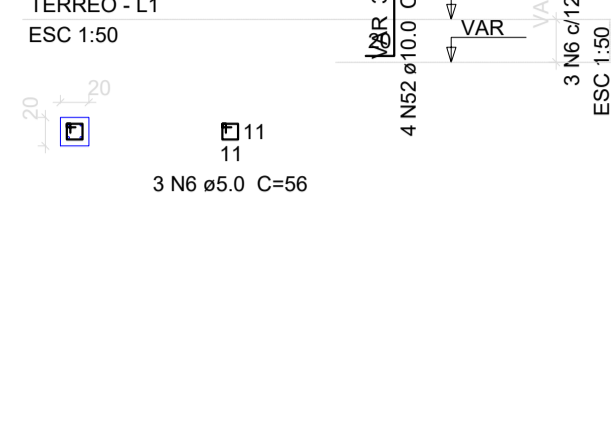
B9=B19=B20=B21=B22=B23=B24=B25=B26=B27  
=B28=B29=B30=B31=B32=B33=B34=B35=B36  
=B37=B38



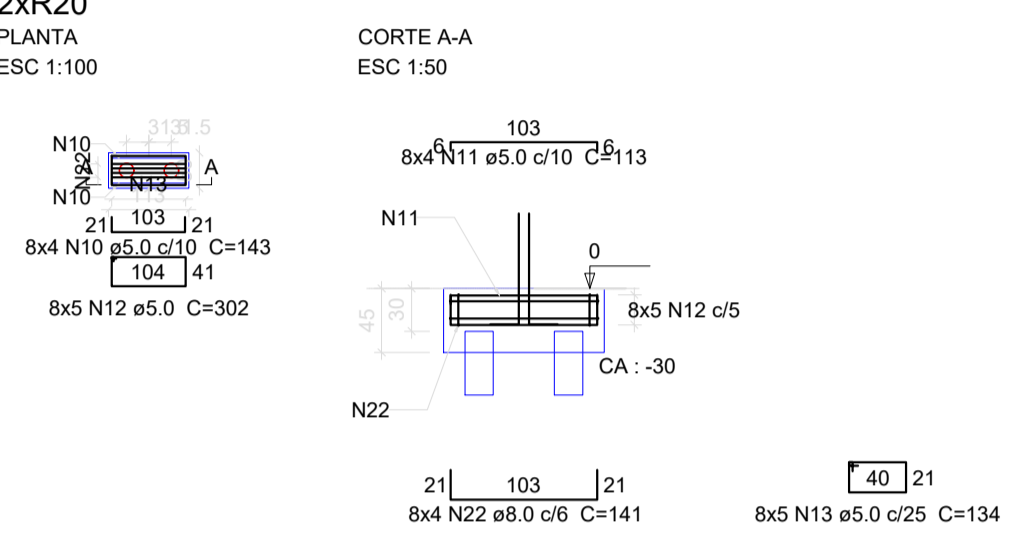
P19=P20=P21=P22=P23=P24=P25=  
=P26=P27=P28=P29=P30=P31=  
=P32=P33=P34=P35=P36=P37=  
=P38



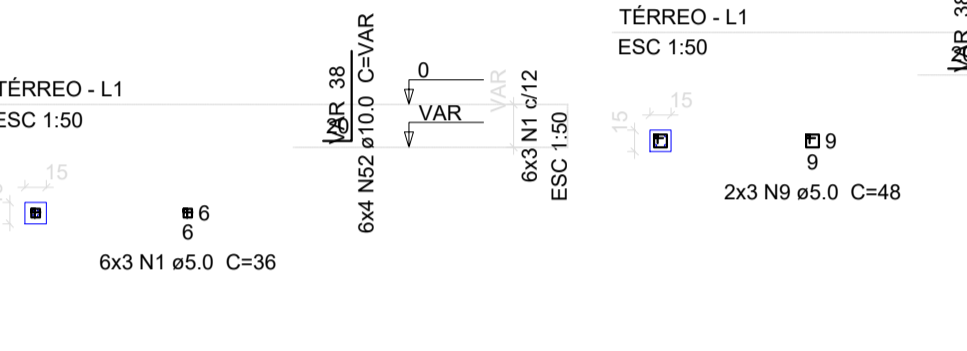
P9



B10=B11=B12=B13=B14=B15=B16=B17



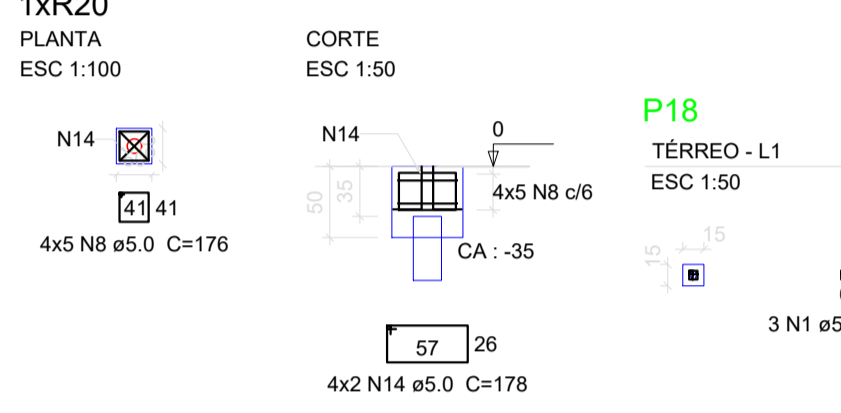
P10=P11=P12=P13=P14=P15



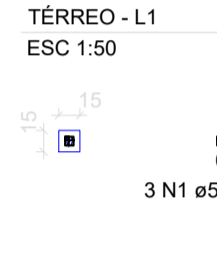
P16=P17



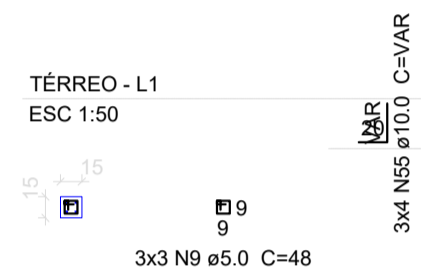
B18=B39=B40=B41



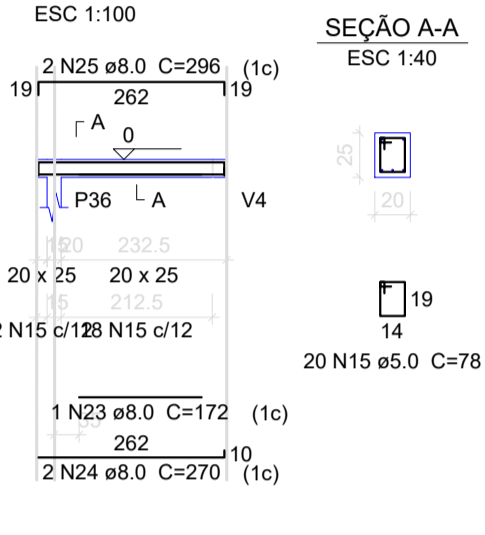
P18



P39=P40=P41

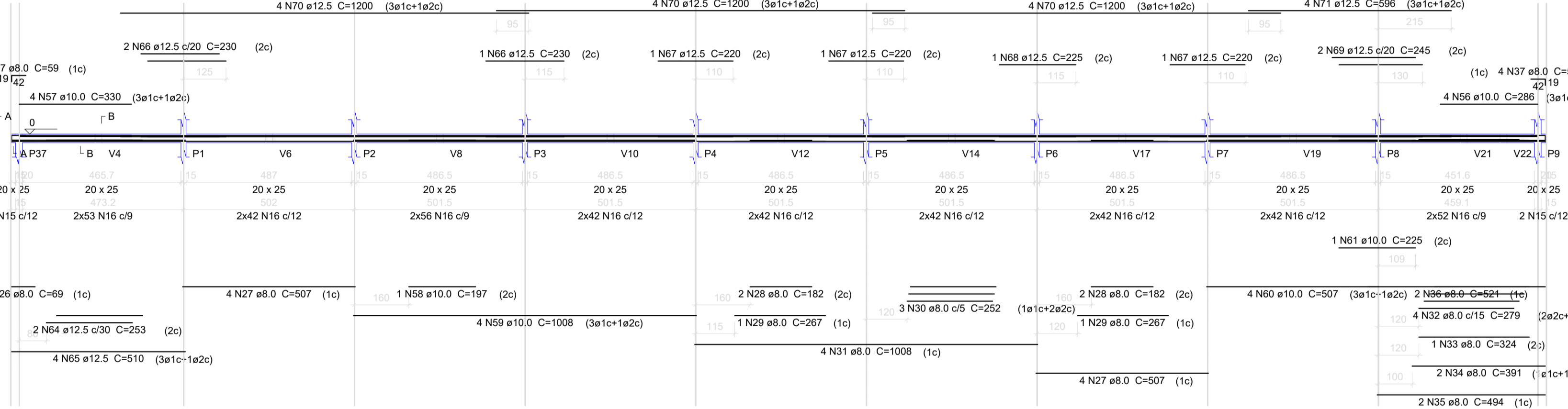


V1



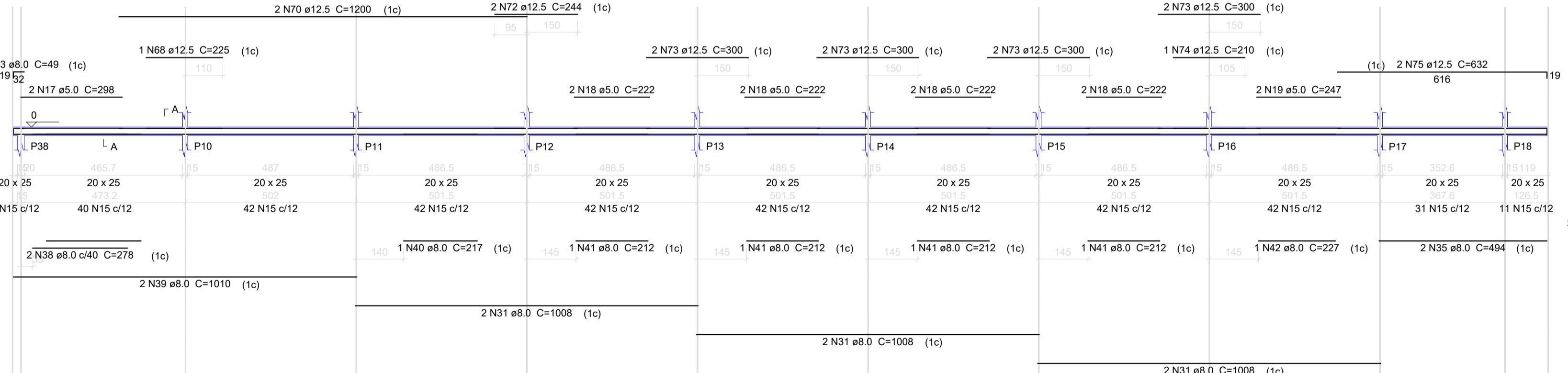
V2

ESC 1:100



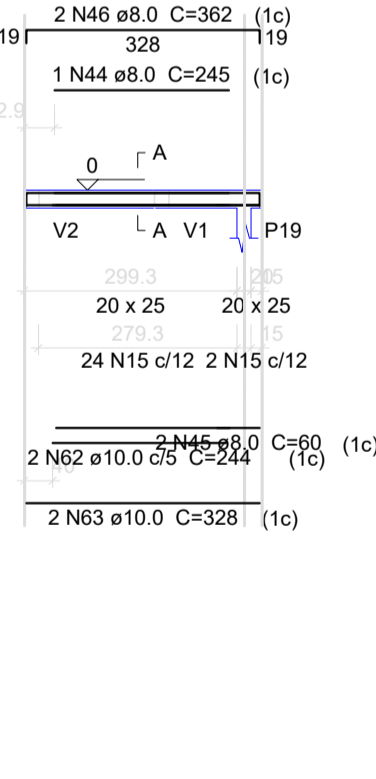
V3

ESC 1:100



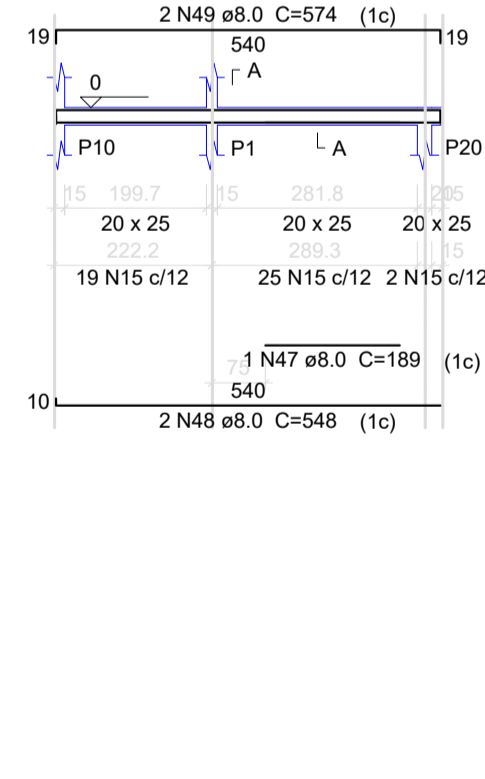
V4

ESC 1:100



V5

ESC 1:100



Relação do aço

ACO	N	DIAM (mm)	QUANT	C.UNIT (cm)	C.TOTAL (cm)
CA60	1	5.0	45	36	1620
CA60	2	5.0	32	148	4736
CA60	3	5.0	32	118	3776
CA60	4	5.0	40	322	12880
CA60	5	5.0	40	144	5760
CA60	6	5.0	63	56	3528
CA60	7	5.0	42	168	7056
CA60	8	5.0	125	176	22000
CA60	9	5.0	15	48	720
CA60	10	5.0	32	143	4576
CA60	11	5.0	32	113	3616
CA60	12	5.0	40	302	12080
CA60	13	5.0	40	134	5360
CA60	14	5.0	8	178	1424
CA60	15	5.0	762	78	59436
CA60	16	5.0	626	68	56168
CA60	17	5.0	2	298	596
CA60	18	5.0	8	222	1776
CA60	19	5.0	2	247	494
CA60	20	5.0	8	306	2448
CA60	21	8.0	32	146	4672
CA60	22	8.0	32	141	4512
CA60	23	8.0	1	172	172
CA60	24	8.0	2	270	540
CA60	25	8.0	2	296	592
CA60	26	8.0	2	69	138
CA60	27	8.0	8	507	4056
CA60	28	8.0	4	182	728
CA60	29	8.0	2	267	534
CA60	30	8.0	3	252	756
CA60	31	8.0	10	1008	10080
CA60	32	8.0	4	279	1116
CA60	33	8.0	1	324	324
CA60	34	8.0	2	391	782
CA60	35	8.0	4	494	1976
CA60	36	8.0	2	521	1042
CA60	37	8.0	8	59	472
CA60	38	8.0	2	278	556
CA60	39	8.0	2	1010	2020
CA60	40	8.0	1	217	217
CA60	41	8.0	4	212	848
CA60	42	8.0	1	227	227
CA60	43	8.0	10	49	490
CA60	44	8.0	1	245	245
CA60	45	8.0	2	60	120
CA60	46	8.0	2	362	724
CA60	47	8.0	5	189	945
CA60	48	8.0	10	548	5480
CA60	49	8.0	10	574	5740
CA60	50	8.0	8	336	2688
CA60	51	8.0	6	224	1344
CA60	52	10.0	68	VAR	VAR
CA60	53	10.0	80	VAR	VAR
CA60	54	10.0	4	VAR	VAR
CA60	55	10.0	12	VAR	VAR
CA60	56	10.0	4	286	1144
CA60	57	10.0	4	330	1320
CA60	58	10.0	1	197	197
CA60	59	10.0	4	1008	4032
CA60	60	10.0	4	507	2028
CA60	61	10.0	1	225	225
CA60	62	10.0	2	244	488
CA60	63	10.0	2	328	656
CA60	64	12.5	2	253	506
CA60	65	12.5	4	510	2040
CA60	66	12.5	3	230	690
CA60	67	12.5	3	220	660
CA60	68	12.5	2	225	450
CA60	69	12.5	2	245	490
CA60	70	12.5	14	1200	16800
CA60	71	12.5	4	596	2384
CA60	72	12.5	2	244	488
CA60	73	12.5	8	300	2400
CA60	74	12.5	1	210	210
CA60	75	12.5	2	632	1264

Resumo do aço

ACO	DIAM (mm)	C.TOTAL (m)	PESO + 10% (kg)
CA50	8.0	541.4	235
CA50	10.0	196.8	133.4
CA50	12.5	283.9	300.8
CA60	5.0	2100.5	356.1
PESO TOTAL (kg)			
CA50		689.2	
CA60		356.1	
Volume de concreto (C-25) = 14.16 m³			
Área de forma = 151.74 m²			

Uni-FACEF

Centro Universitário Municipal de Franca

PROJ: FERRAGEM NIVEL 0  
PROP: Uni-FACEF

E  
2/3

LOCAL:  
BAIRRO:

ÁREAS	m²	PROPRIETARIO:	PROJETO:
ÁREA CONSTRUIDA	33.00	Uni-FACEF - Centro Universitário Municipal de Franca	GUILHERME AUGUSTO B. F. CLEMENTE ENG CIVIL - CREA 062775007
ÁREA A CONSTRUIR	272.00		
TOTAL	305.00	FISCALIZACAO:	