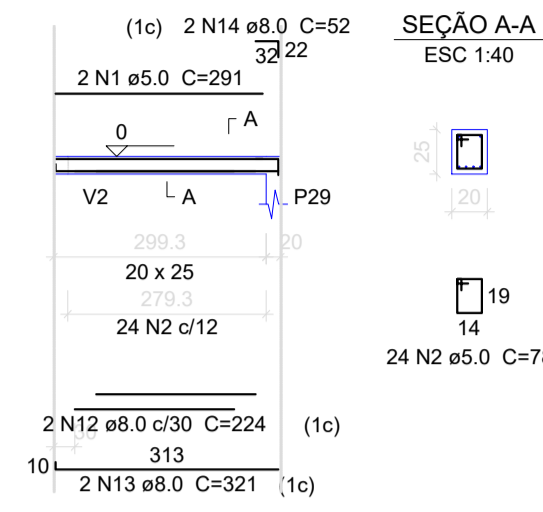
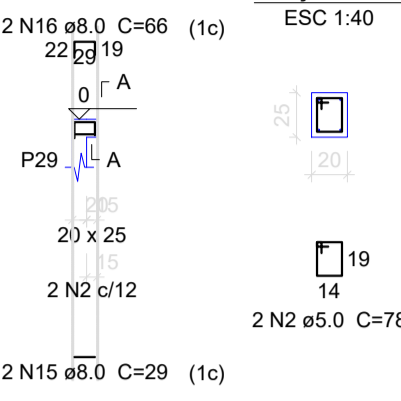


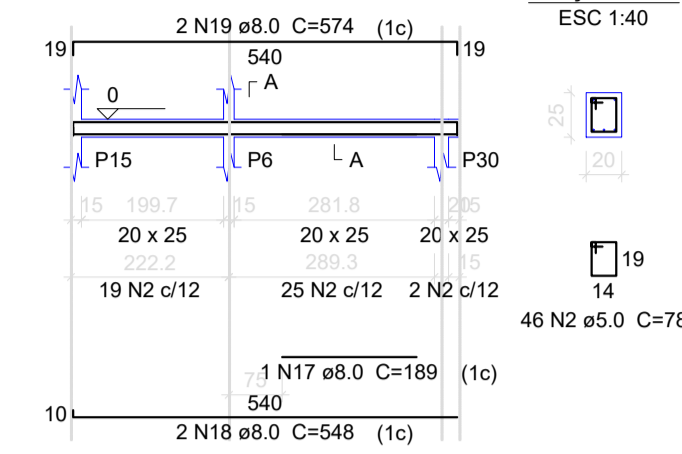
V14
ESC 1:100



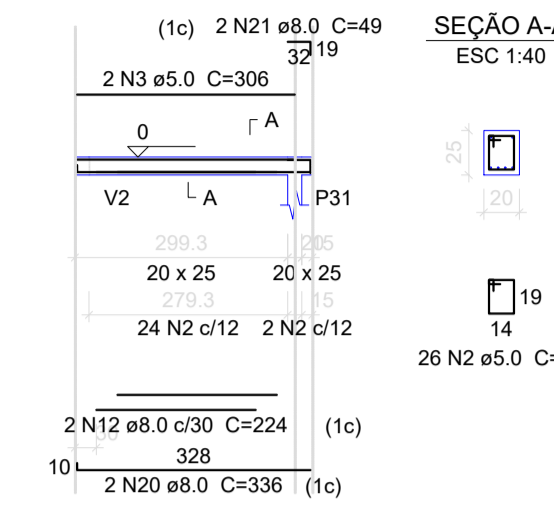
V15
ESC 1:100



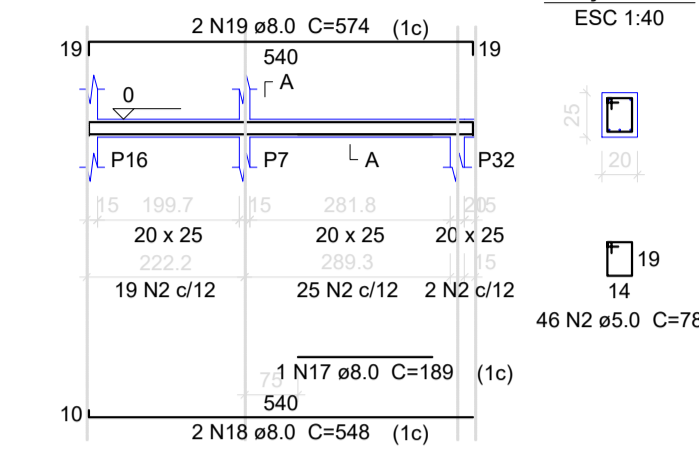
V16
ESC 1:100



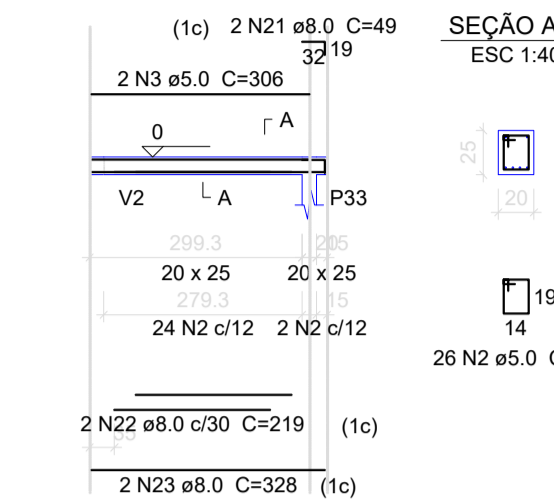
V17
ESC 1:100



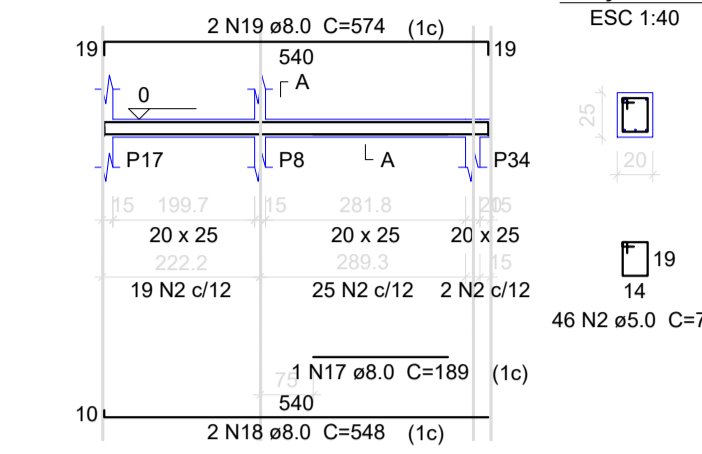
V18
ESC 1:100



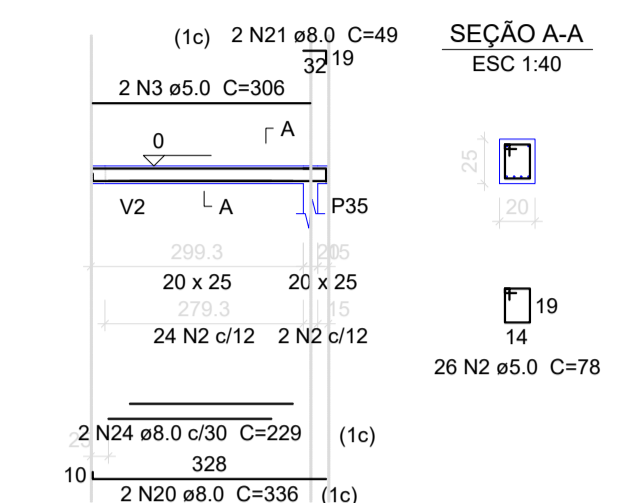
V19
ESC 1:100



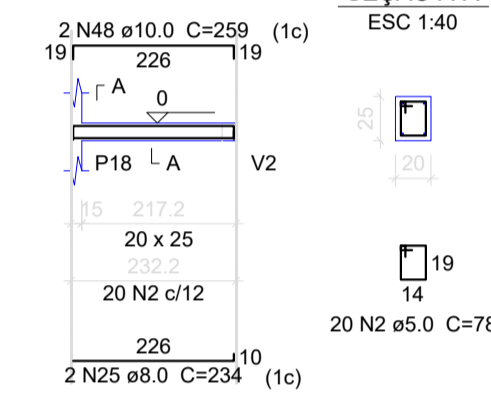
V20
ESC 1:100



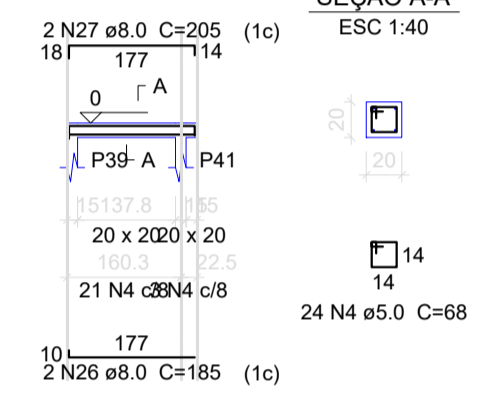
V21
ESC 1:100



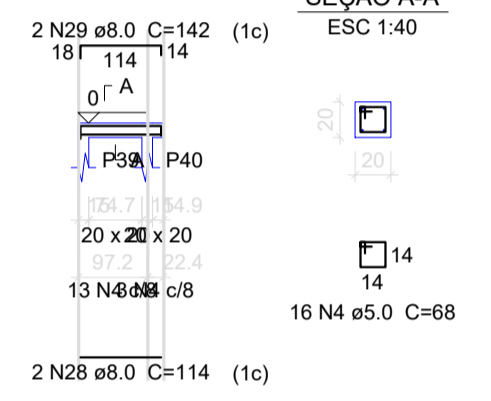
V22
ESC 1:100



V23
ESC 1:100

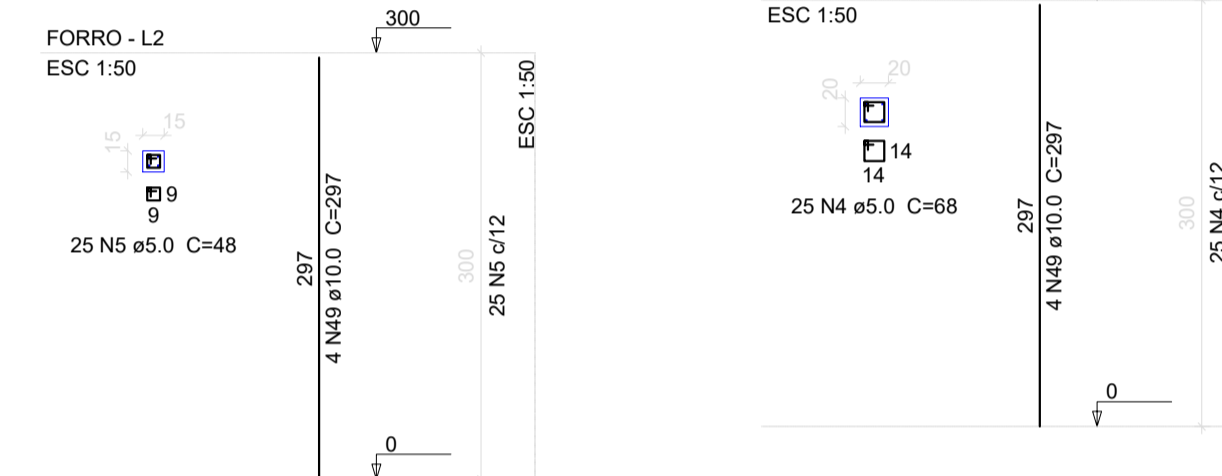


V24
ESC 1:100

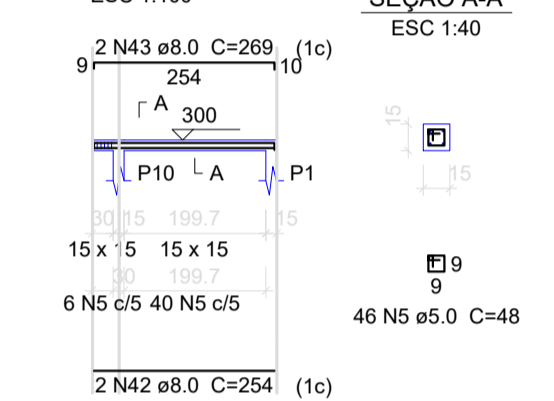


P1=P2=P3=P4=P5=P6=P7=P8=
=P10=P11=P12=P13=P14=
=P15=P16=P17=P18

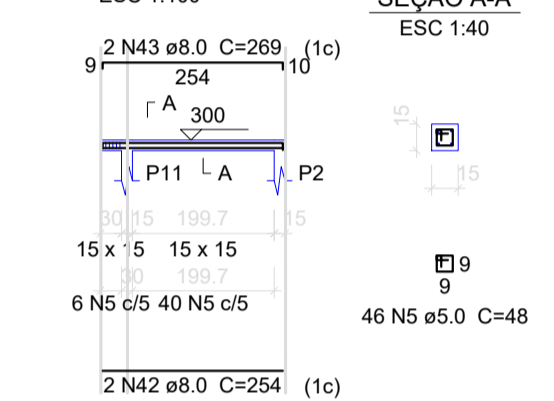
P9



V3
ESC 1:100



V4
ESC 1:100



Relação do aço

forro:	17xP1	P9
	V1	V2
	V3	V4
	V5	V6
	V7	V8
	V9	V10
	V11	V12
térreo:	V14	V15
	V16	V17
	V18	V19
	V20	V21
	V22	V23
	V24	

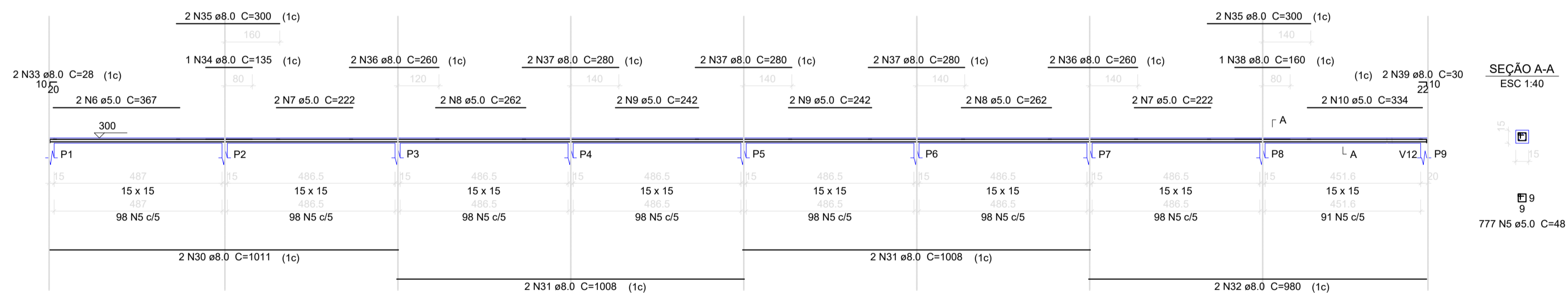
AÇO	N	DIAM (mm)	QUANT	C.UNIT (cm)	C.TOTAL (cm)
CA60	1	5.0	2	291	582
	2	5.0	262	78	20436
	3	5.0	6	306	1836
	4	5.0	65	68	4420
	5	5.0	2373	48	113904
	6	5.0	4	367	1468
	7	5.0	6	222	1332
	8	5.0	8	262	2096
	9	5.0	10	242	2420
	10	5.0	2	334	668
	11	5.0	2	238	476
CA50	12	8.0	6	224	1344
	13	8.0	2	321	642
	14	8.0	2	52	104
	15	8.0	2	29	58
	16	8.0	2	132	132
	17	8.0	3	189	567
	18	8.0	6	548	3288
	19	8.0	6	574	3444
	20	8.0	4	336	1344
	21	8.0	6	49	294
	22	8.0	2	219	438
	23	8.0	2	328	656
	24	8.0	2	229	458
	25	8.0	2	234	468
	26	8.0	2	185	370
	27	8.0	2	205	410
	28	8.0	2	114	228
	29	8.0	2	142	284
	30	8.0	4	1011	4044
	31	8.0	8	1008	8064
	32	8.0	2	980	1960
	33	8.0	6	28	168
	34	8.0	2	135	270
	35	8.0	6	300	1800
	36	8.0	6	260	1560
	37	8.0	14	280	3920
	38	8.0	1	160	160
	39	8.0	2	30	60
	40	8.0	2	876	1752
	41	8.0	2	255	510
	42	8.0	16	254	4064
	43	8.0	14	269	3766
	44	8.0	2	39	78
	45	8.0	2	54	108
	46	8.0	2	240	480
	47	8.0	2	268	536
	48	10.0	2	259	518
	49	10.0	72	297	21384

Resumo do aço

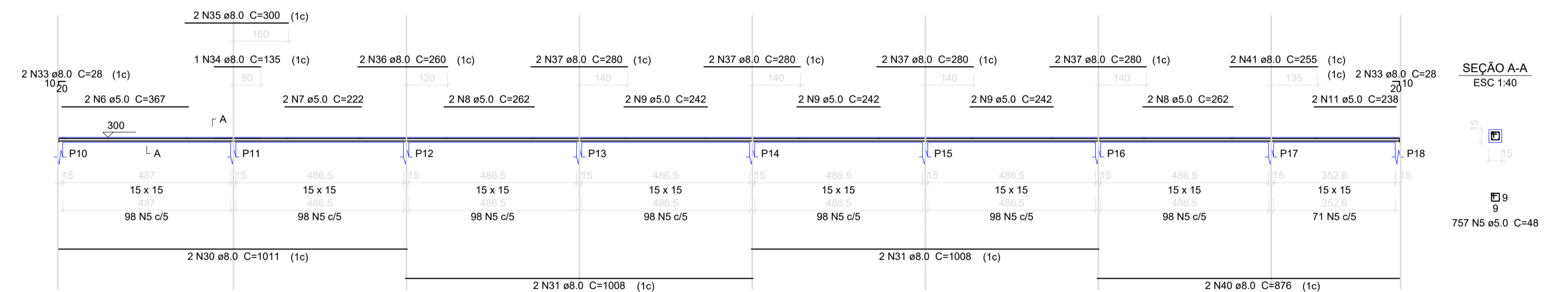
AÇO	DIAM (mm)	C.TOTAL (m)	PESO + 10% (kg)
CA50	8.0	478.3	207.6
CA60	5.0	219.1	148.5
CA60	5.0	1496.4	253.7
PESO TOTAL (kg)			
CA50		356.1	
CA60		253.7	

Volume de concreto (C-25) = 5.31 m³
Área de forma = 103.51 m²

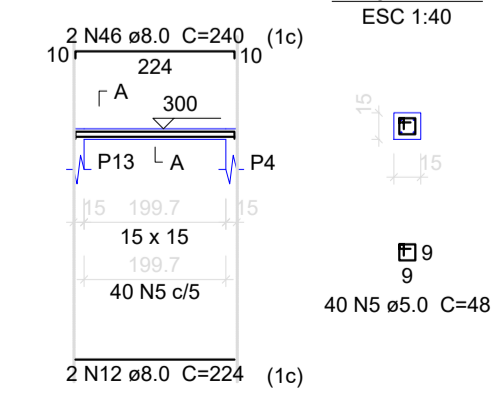
V1
ESC 1:100



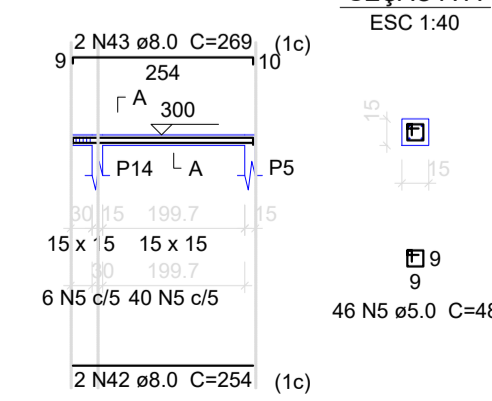
V2
ESC 1:100



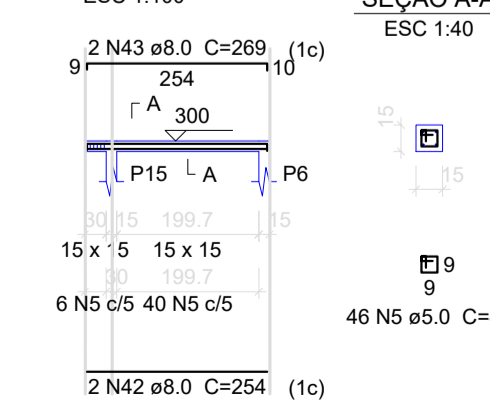
V7
ESC 1:100



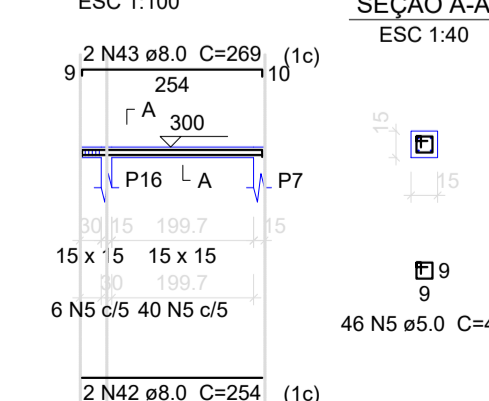
V8
ESC 1:100



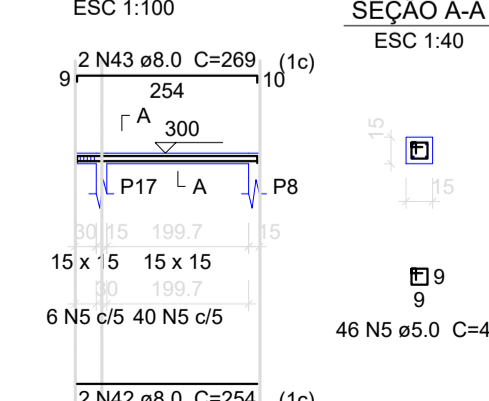
V9
ESC 1:100



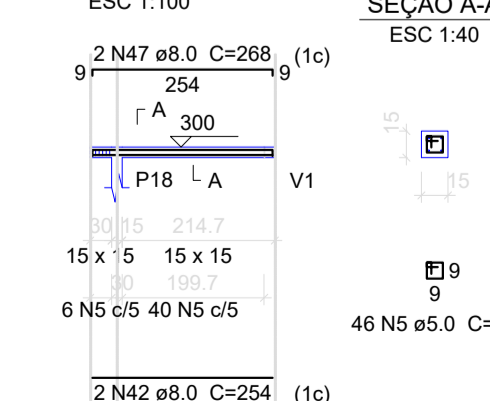
V10
ESC 1:100



V11
ESC 1:100



V12
ESC 1:100



Uni-FACEF

Centro Universitário Municipal de Franca

PROJ: FERRAGEM NIVEL 300
PROP: Uni-FACEF

E
3/3

LOCAL:
BAIRRO:

ÁREAS	m²	PROPRIETARIO:	
ÁREA CONSTRUIDA	33.00	PROJETO	Uni-FACEF - Centro Universitário Municipal de Franca
ÁREA A CONSTRUIR	272.00	FISCALIZACAO:	GUILHERME AUGUSTO B. F. CLEMENTE ENG CIVIL CREA 5062775007
TOTAL	305.00		