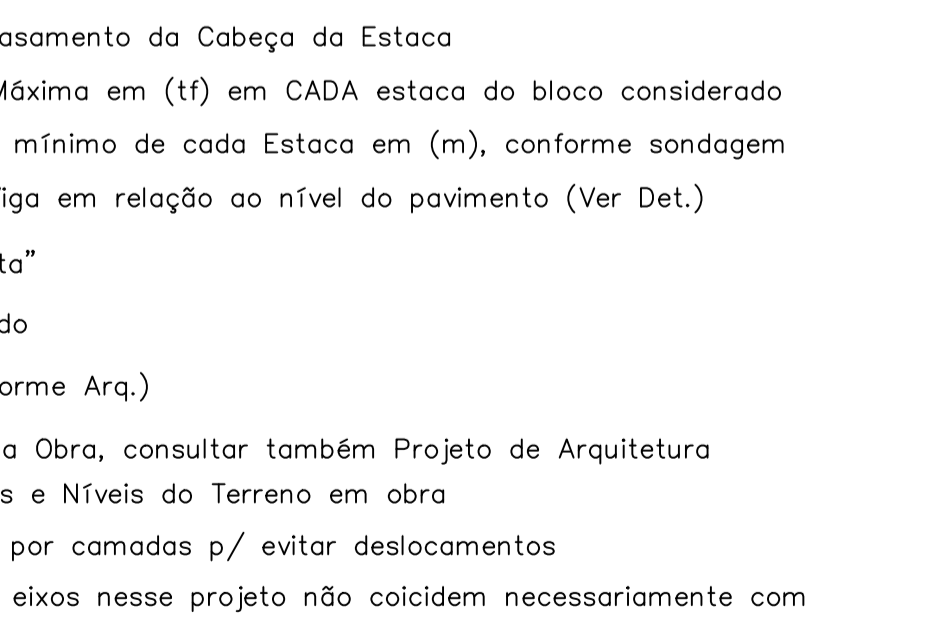
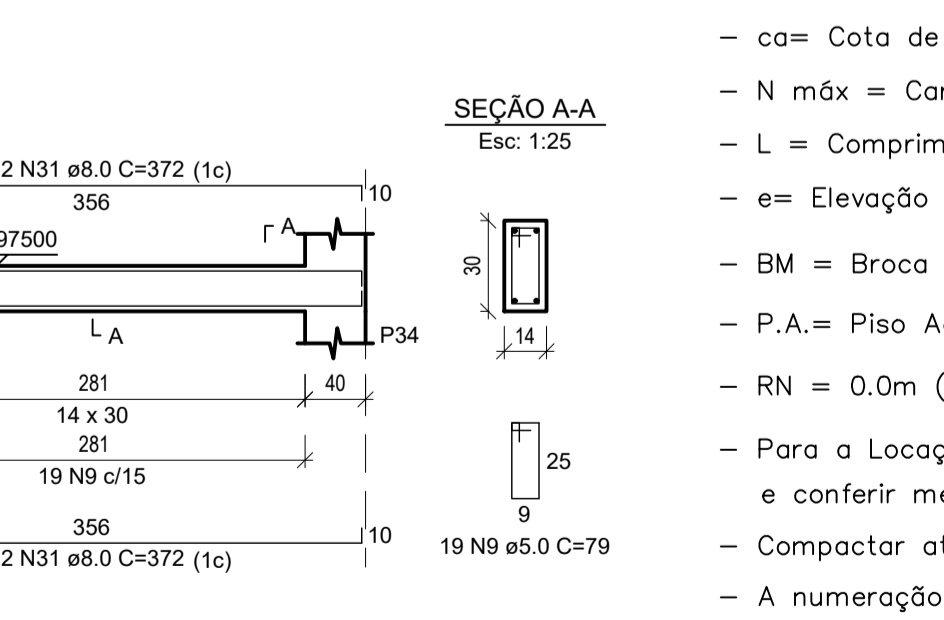
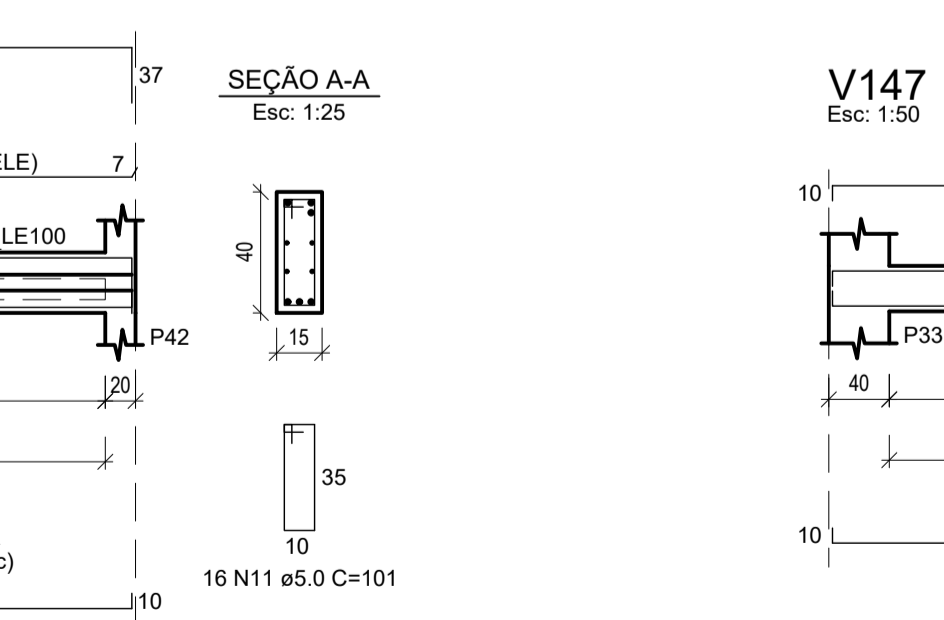
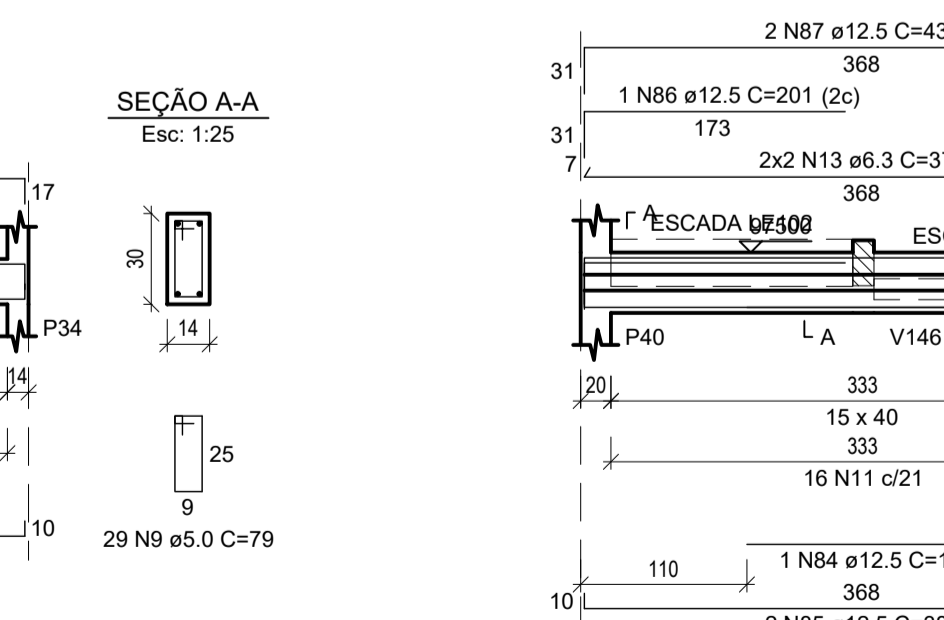
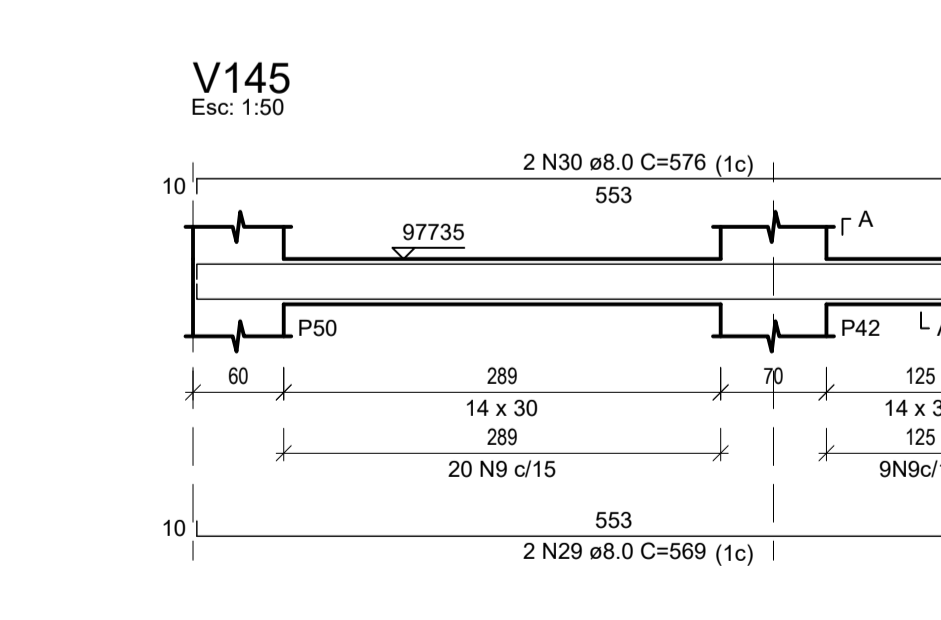
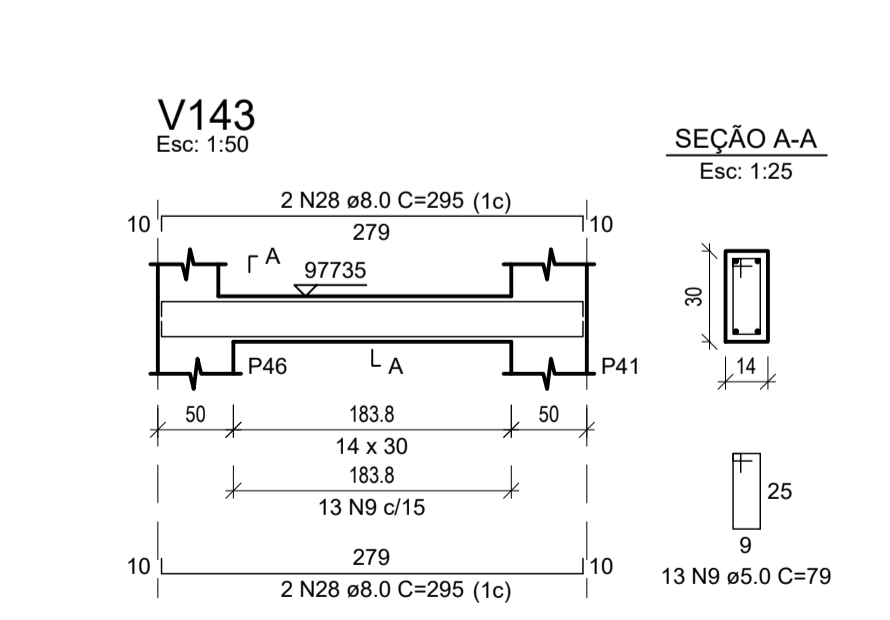
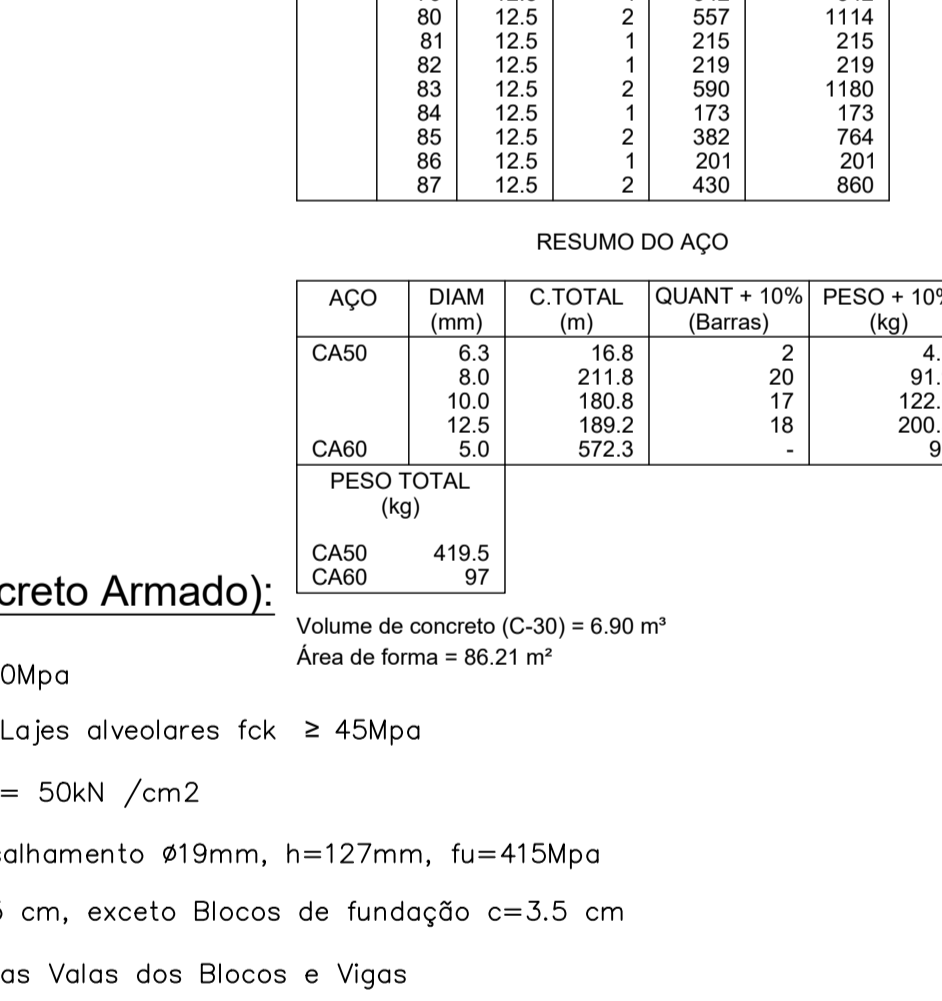
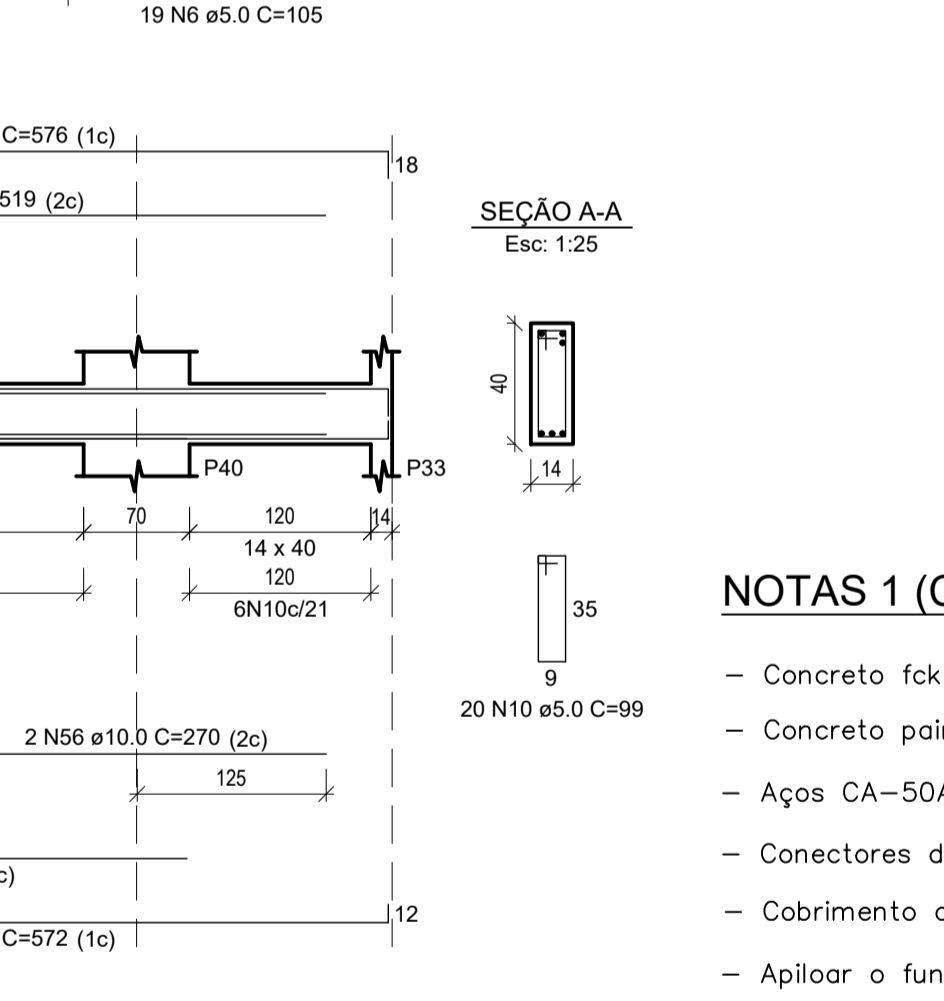
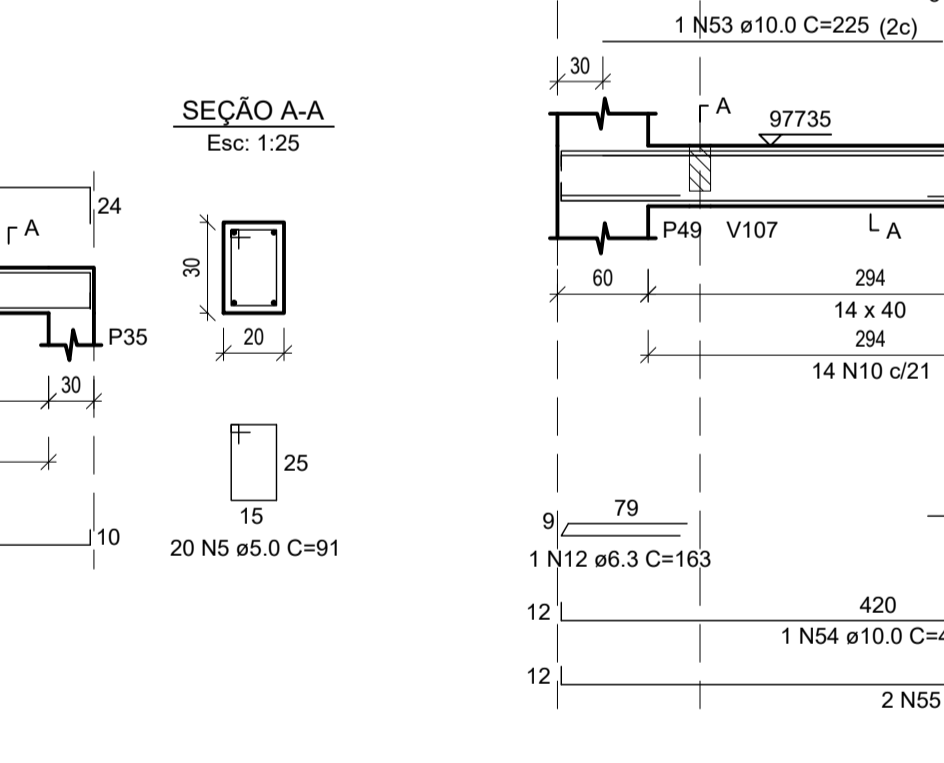
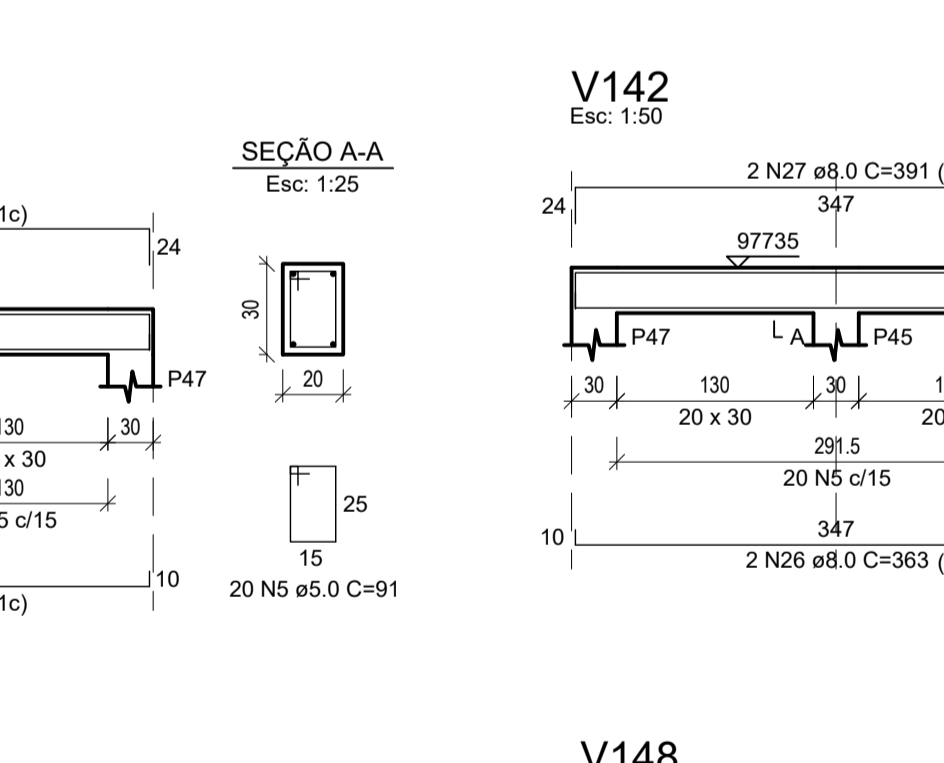
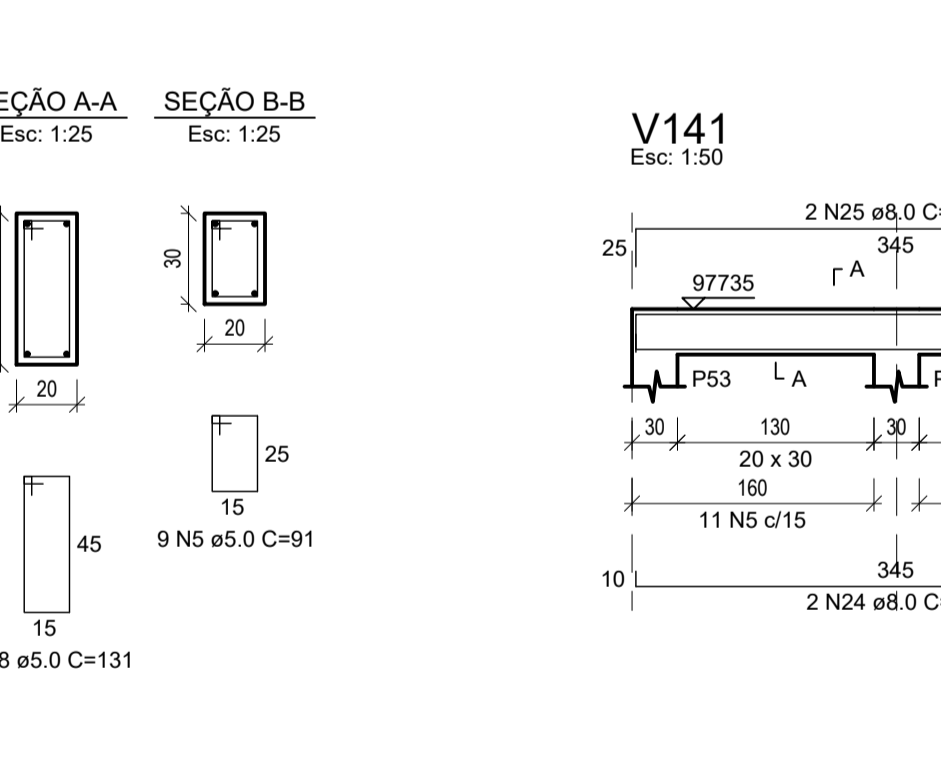
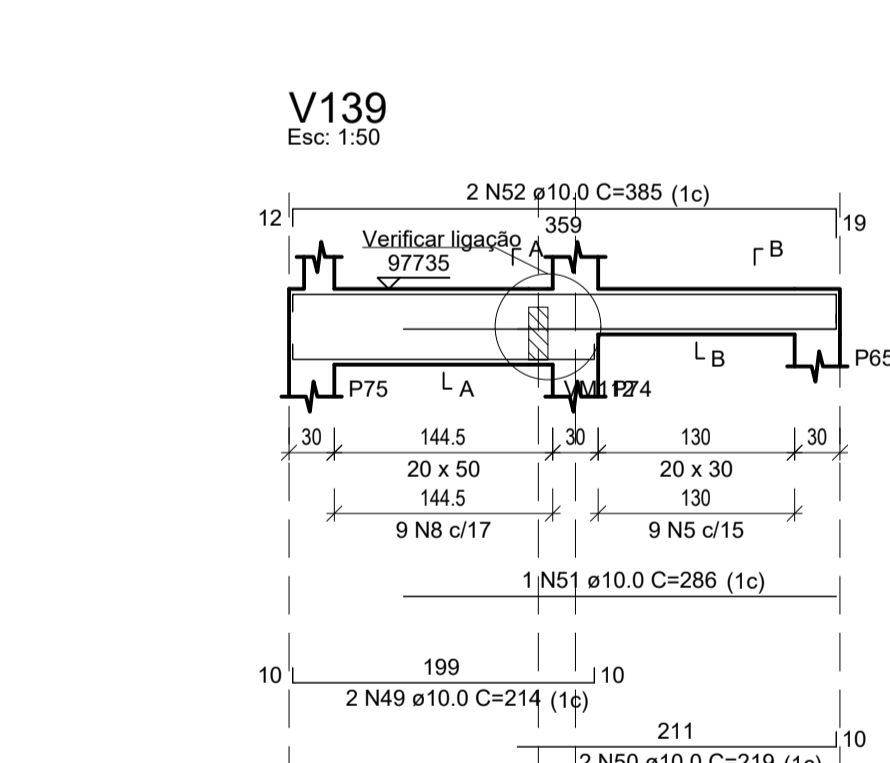
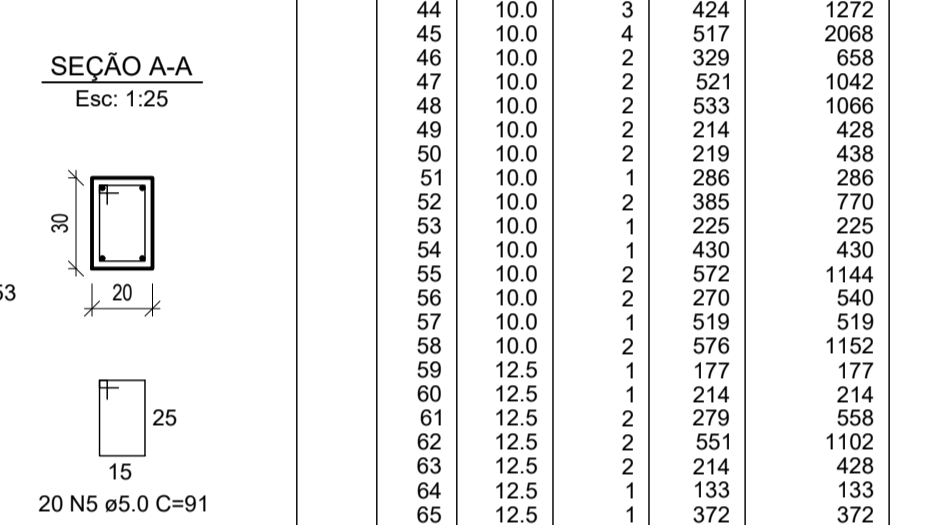
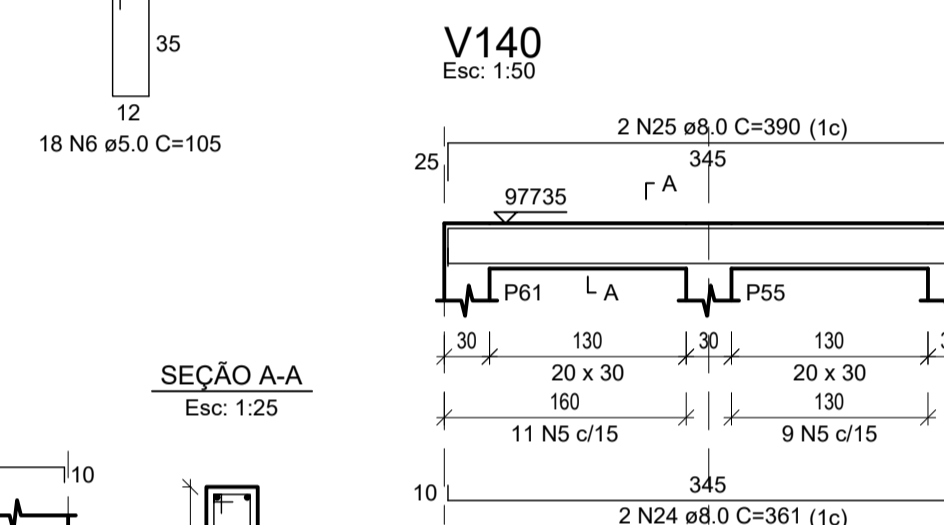
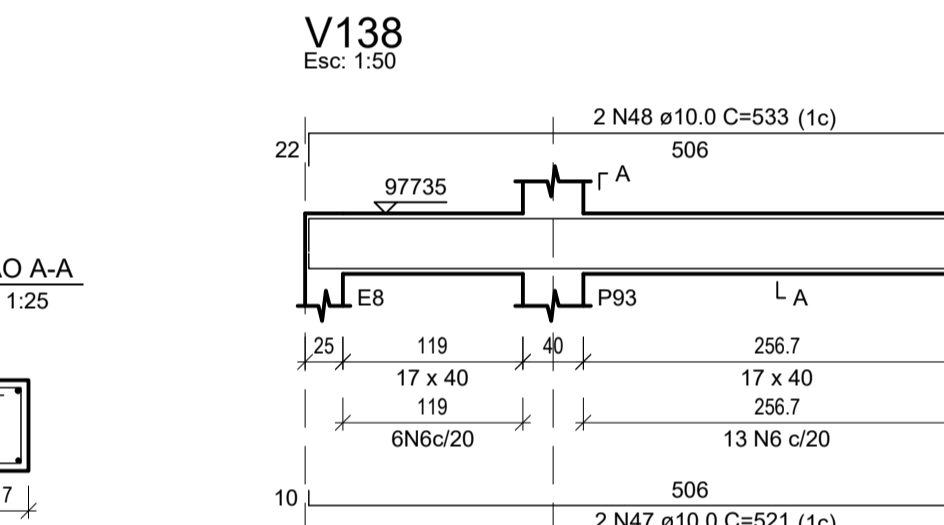
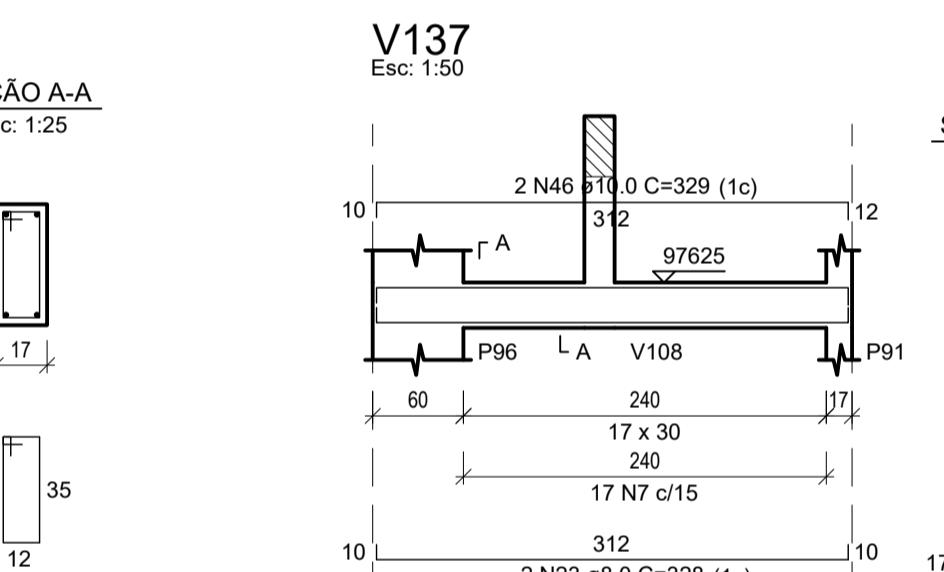
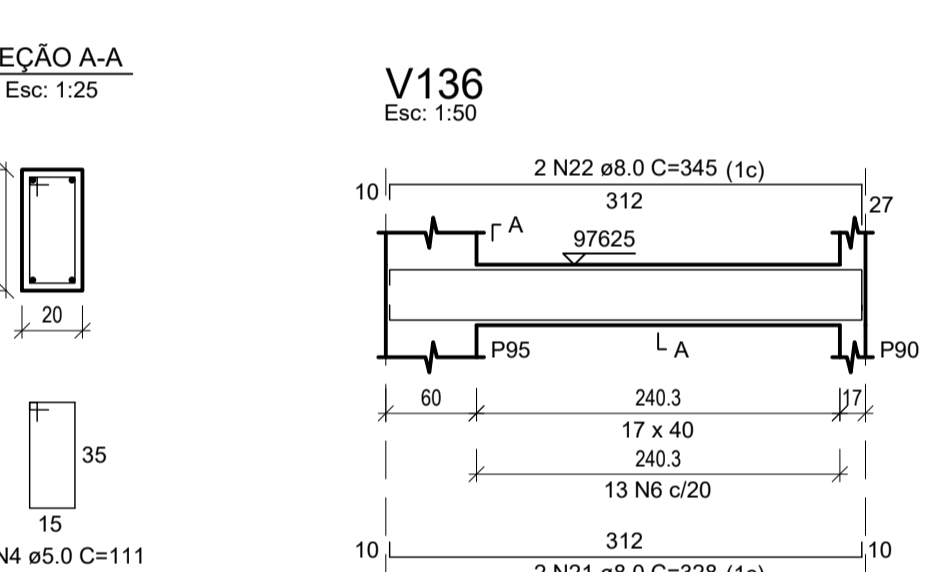
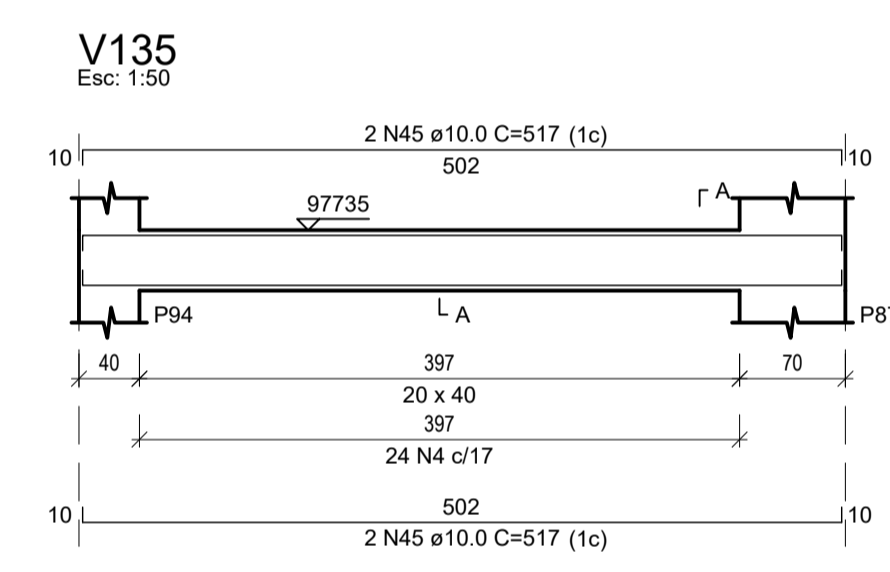
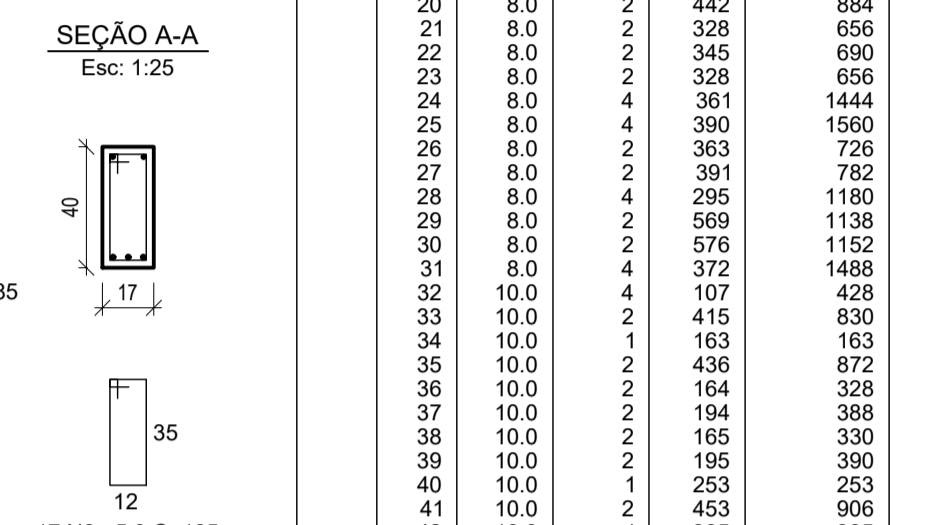
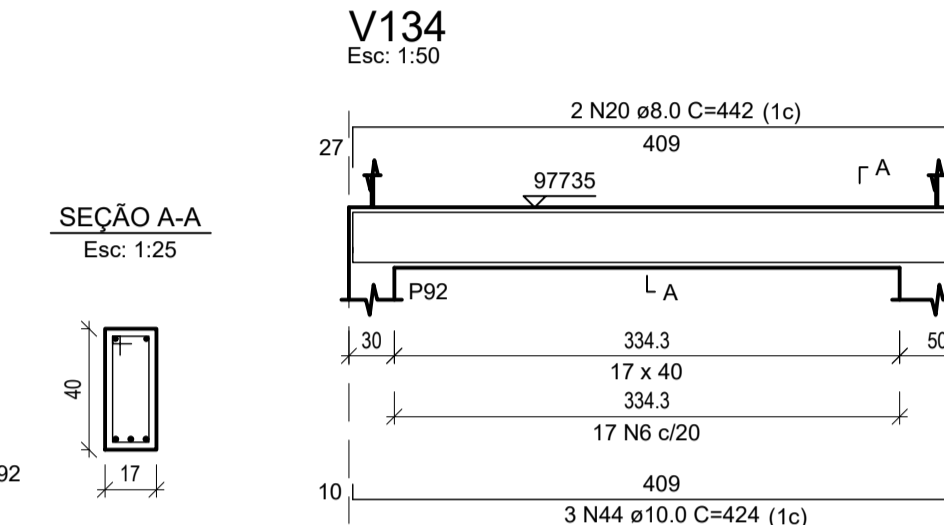
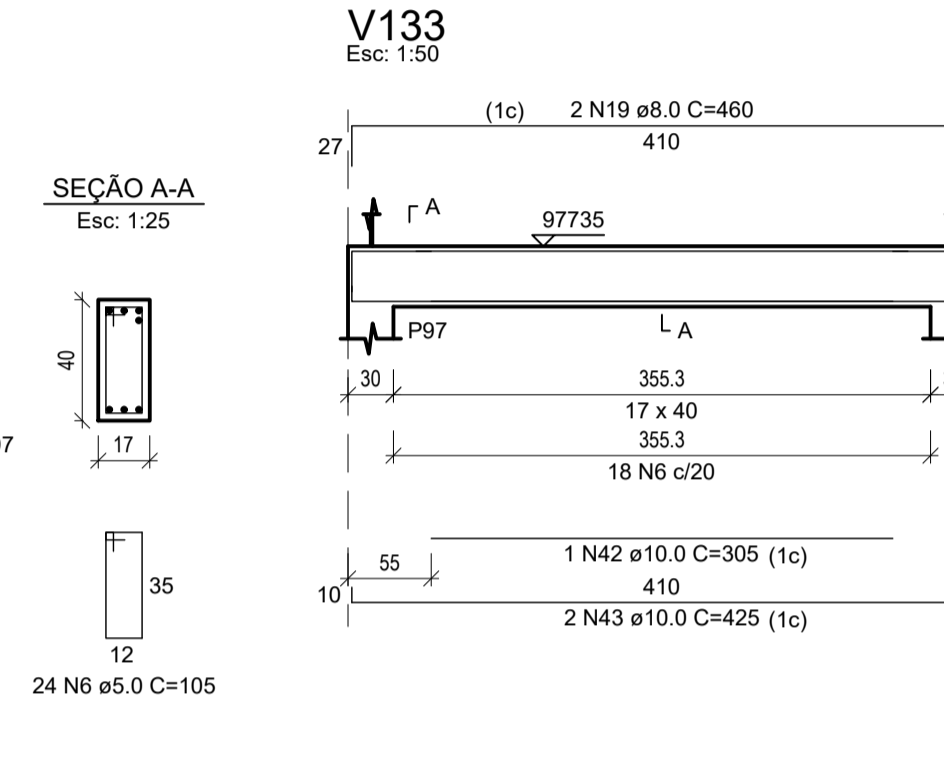
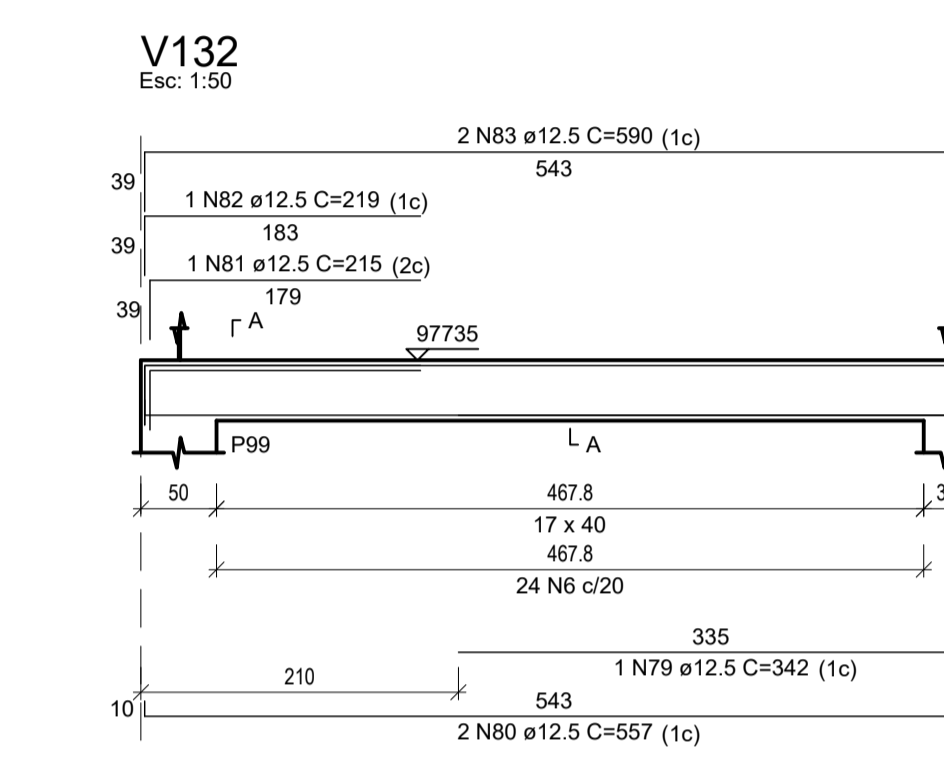
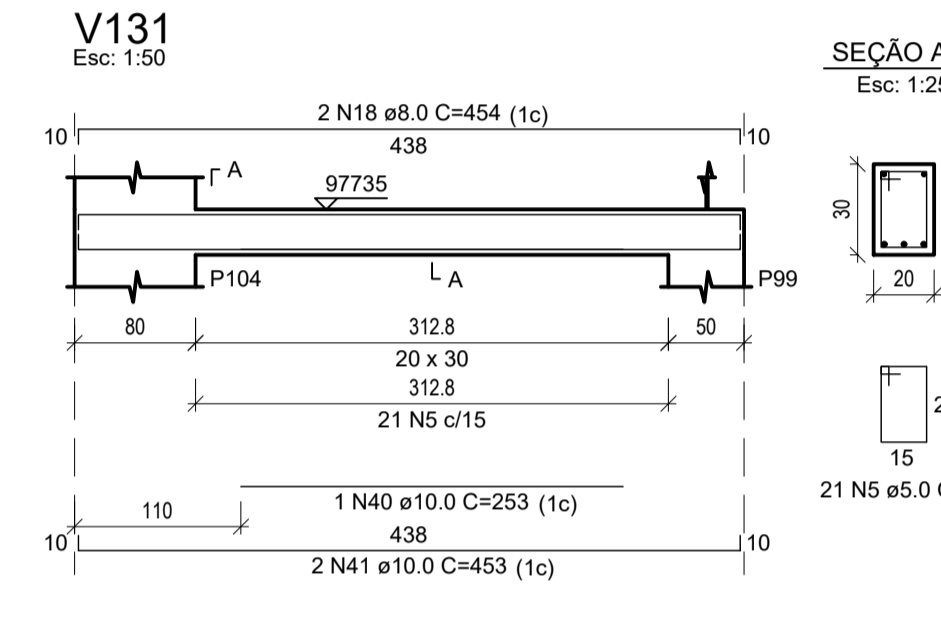
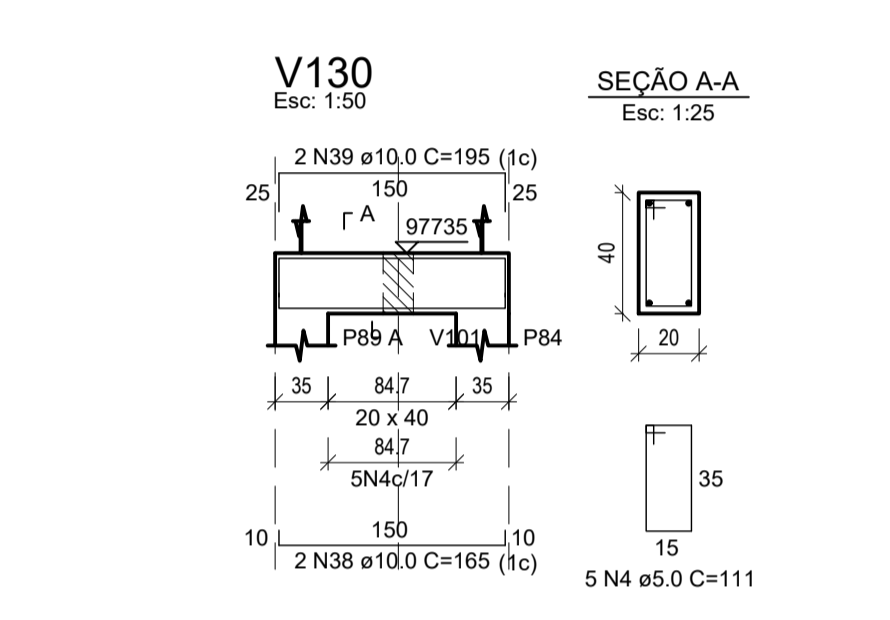


RELAÇÃO DO AÇO

ACO	N	DIAM (mm)	QUANT	C UNIT (cm)	C TOTAL (cm)
CA60	1	5.0	137	151	20687
	2	5.0	4	81	324
	3	5.0	33	111	3663
	4	5.0	34	111	3774
	5	5.0	90	91	8190
	6	5.0	91	105	9555
	7	5.0	17	85	1445
	8	5.0	9	131	1179
	9	5.0	61	79	4819
	10	5.0	20	99	1980
CA50	11	5.0	16	101	1616
	12	6.3	1	163	163
	13	6.3	4	378	1512
	14	8.0	6	275	1650
	15	8.0	2	205	1230
	16	8.0	6	295	1770
	17	8.0	6	391	2346
	18	8.0	2	454	908
	19	8.0	2	460	920
	20	8.0	2	442	884
	21	8.0	2	328	656
	22	8.0	2	345	690
	23	8.0	2	328	656
	24	8.0	4	361	1444
	25	8.0	4	390	1560
	26	8.0	2	363	726
	27	8.0	2	391	782
	28	8.0	4	295	1180
	29	8.0	2	569	1138
	30	8.0	2	576	1152
	31	8.0	4	372	1488
	32	10.0	4	107	428
	33	10.0	2	415	830
	34	10.0	1	163	163
	35	10.0	2	436	872
	36	10.0	2	164	328
	37	10.0	2	194	388
	38	10.0	2	165	330
	39	10.0	3	195	390
	40	10.0	1	253	253
	41	10.0	2	453	906
	42	10.0	1	305	305
	43	10.0	2	425	850
	44	10.0	3	424	1272
	45	10.0	4	517	2068
	46	10.0	2	329	658
	47	10.0	2	521	1042
	48	10.0	2	533	1066
	49	10.0	2	214	428
	50	10.0	2	219	438
	51	10.0	1	286	286
	52	10.0	2	385	770
	53	10.0	1	225	225
	54	10.0	1	430	430
	55	10.0	2	572	1144
	56	10.0	2	270	540
	57	10.0	2	219	438
	58	10.0	2	576	1152
	59	12.5	1	177	177
	60	12.5	1	214	214
	61	12.5	2	279	558
	62	12.5	2	551	1102
	63	12.5	2	214	428
	64	12.5	1	133	133
	65	12.5	1	372	372
	66	12.5	3	433	1299
	67	12.5	2	583	1166
	68	12.5	2	129	258
	69	12.5	2	399	798
	70	12.5	1	315	315
	71	12.5	2	348	696
	72	12.5	2	459	918
	73	12.5	10	109	1090
	74	12.5	3	157	471
	75	12.5	3	405	1215
	76	12.5	2	228	456
	77	12.5	3	286	798
	78	12.5	3	462	1386
	79	12.5	1	342	342
	80	12.5	2	557	1114
	81	12.5	1	215	215
	82	12.5	1	219	219
	83	12.5	2	590	1180
	84	12.5	1	173	173
	85	12.5	2	382	764
	86	12.5	1	201	201
	87	12.5	2	430	860



RESUMO DO AÇO

ACO	DIAM (mm)	C TOTAL (m)	QUANT + 10%	PESO + 10% (kg)
CA50	6.3	16.8	2	4.5
	8.0	211.8	20	51.9
	10.0	180.8	17	122.6
	12.5	189.2	18	200.5
CA60	5.0	572.3	18	97

- NOTAS 1 (Concreto Armado):**
- Concreto fck ≥ 30Mpa
 - Concreto painéis Lajes alveolares fck ≥ 45Mpa
 - Aços CA-50A fyk= 50KN/cm2
 - Conectores de cisalhamento Ø19mm, h=127mm, fu=415Mpa
 - Cobrimento c=2.5 cm, exceto Blocos de fundação c=3.5 cm
 - Apilao o fundo das Valas dos Blocos e Vigas
 - Conferir Cotas e Níveis em Obra
 - ca= Cota de Arrasamento da Cabeça da Estaca
 - N máx = Carga Máxima em (tf) em CADA estaca do bloco considerado
 - L = Comprimento mínimo de cada Estaca em (m), conforme sondagem
 - e= Elevação da Viga em relação ao nível do pavimento (Ver Det.)
 - BM = Broca "Morta"
 - P.A.= Piso Acabado
 - RN = 0.0m (Conforme Arq.)
 - Para a Locação da Obra, consultar também Projeto de Arquitetura e conferir medidas e Níveis do Terreno em obra
 - Compactar aterro por camadas p/ evitar deslocamentos
 - A numeração dos eixos nesse projeto não coincidem necessariamente com a numeração dos eixos das paredes no projeto de Arquitetura

Nº	DATA	REVISÃO	EXECUTADO POR	APROVADO POR	NOTAS	RESPONSÁVEL TÉCNICO
					1- CONFERIR MEDIDAS NO LOCAL; 2- OS AMBIENTES QUE APRESENTAM INSUFICIÊNCIA DE ILUMINAÇÃO E VENTILAÇÃO NATURAL SERÃO SUPRIDOS POR ILUMINAÇÃO ARTIFICIAL (LÂMPADAS DE LED OU FLUORESCENTES) E VENTILAÇÃO MECÂNICA CONFORME DETERMINA O ART. 48 DO DECRETO ESTADUAL 12.342/1978	FABIANO TOFOLLI MOREIRA ARQUITETO - CAU/SP A24366-3



Tofolli & Moreira
Projetos e Construções Ltda.
CNPJ: 09.372.436/0001-86

PROPRIETÁRIO: CENTRO UNIVERSITÁRIO MUNICIPAL DE FRANCA - Uni-FACEF	FL. 36/51
PROJETO: ANTEPROJETO DE ARQUITETURA PARA EDIFICAÇÃO DO AMBULATÓRIO ESCOLA, CLÍNICA DE PSICOLOGIA, SVO E OUTROS COM INTERLIGAÇÃO, ANEXO ÀS UNIDADES II E III.	REV.
ASSUNTO: ARMAÇÃO DAS VIGAS DO 1o. PAVIMENTO	ESCALA
LOCAL: FRANCA - SP	1:50